

Newsletter

THE
FACILITATOR
The Newsletter for facility management professionals

Resources

Newsletter

Education

CFM

Job Bank

Contacts



Mark Your Calendar

May 18, 2004
Tour of Kansas
Speedway

June 3, 2004
Annual Golf Outing
Painted Hills Golf
Course

July 20, 2004
So You Want to
Build a Building
Christ Community
Church

Uncle IFMA Wants You

Your IFMA chapter is looking for a few good members to step up and be counted as our next Board of Directors. We will be conducting our annual election of officers in September for the year 2001 and we need candidates. You do not need to be a professional member to serve as an officer nor do you have to be a member for a length of time. In fact, we would like to encourage our newer members to be active, as we need some new ideas and concepts.

I have now served on the Board for several years and have found it to be fun and rewarding. Granted that nothing is free and this responsibility does take a **commitment** of our most precious commodity — time. However, the opportunity to meet and interact with many different people in our profession both locally and nationally does not come along very often. You see new ideas and solutions and make many new friends. It also affords the opportunity to practice various phases of management that you may not be involved with in your current position, but can help you professionally later.

This is a great time to step forward and volunteer to help yourself as well as the chapter. Next year we have many activities planned and **the biggest one of all, World Workplace 2001, is in Kansas City!**

Sam Davidson is compiling the list of candidates for the officer election, as well as those interested in any of our committee chairperson positions. Please give Sam a call and volunteer your services. The Board is always looking for those members who wish to participate and become even more active in this great organization.

Contents

[Uncle IFMA \](#)
[World Workp](#)
[World Workp](#)
[August Progr](#)
[July Program](#)
[Corporate Sp](#)
[Help Wanted](#)
[CFM Exam F](#)
[Financial Sta](#)
[Quick Pix](#)
[Mark Your C:](#)
[Corporate Sp](#)
[Kansas City I](#)



Richard Baum

Chapter
President

World Workplace 2000
The Evolution of Thought on the Modern Workplace.
September 17-19, 2000
New Orleans, LA.

As a professional involved in the facility management industry, you have probably discovered it difficult, at best, to find available resources to address the vast array of problems you encounter each day in your job. IFMA's World Workplace will offer a plethora of pertinent information related to facility management.

World Workplace is the only conference and exposition that combines all disciplines of the industry. It is where professionals meet to continue the evolution of thought on providing effective work environments, and to learn how work environments are transforming.

Offering more than 70 educational programs, World Workplace presents current principles from the workplace industry's most well respected organizations. It will offer broad vision of the workplace with insight on:

- E-business
- Globalization
- Innovative financing
- Knowledge management
- Outsourcing strategies
- Strategic asset management
- Telework
- Workspace design

Unlike any other exposition, the Learning Center is an integral part of World Workplace's experience. Directly linked to educational sessions through the icon system, exhibitors can interpret and evaluate new ideas, procedures and opportunities involving subjects like:

- Acoustics and sound masking
- Alarm and security systems
- Architecture, design and engineering services
- Asset management
- Collaborative software
- Commercial art
- Computer-aided design and management systems
- Construction and project management services
- Facility management outsourcing
- Floor coverings, fabrics and fibers
- Furniture and fixtures
- Lighting systems and services
- Maintenance and operations systems and services

Visit the World Workplace web site at www.worldworkplace.org for further information or online. You can also call for more information by dialing (713) 629-6753.

Also, if you plan to attend, please email Teena Shouse and let her know. Her email address is teena.shouse@mail.sprint.com.

World Workplace 2001 Will be held in Kansas City!

Plan now to be a part of this outstanding conference.
To volunteer, call Jack Tinnel at (816) 274-8719.

August Program Preview The Second Bottom Line

The American workplace of the 21st Century will be dramatically different from the workp past, as will the American Worker. New research provides insight into what companies c a workplace that meets the needs and requirements of today's workforce. Today, compa striving to be an "employer of choice," looking at ways to create a work environment to a and retain high performing employees.

Christine Barber, Director of Workplace Research for Knoll, will present her latest finding context of current work styles and lifestyle trends and how these influence the emerging Christine Barber is a presenter at World Workplace 2000 in New Orleans. We are very p Christine come to KC to give us a preview of this latest information.

When:

Tuesday, August 15, 2000
11:30 a.m. - 1:00 p.m.

Where:

Jewish Community Campus
Near 115th and Nall
5801 W. 115th Street (One block west of Nall)

Cost:

\$15 for members
\$20 for non-members

RSVP:

Call the IFMA Program line
at 913-906-6000, ext. 1144
by August 11. Speak clearly
and/or spell your name.

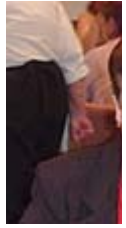
July Program Review Sharing of Our Intellectual Capital

The July meeting, coordinated by Jackie Coleman and Diane Bashor, was a great success! There were 45 in attendance. After a great lunch provided by Yellow Freight's catering group, we divided into four round table discussion groups. Linda DeTienne of National Catastrophe Restoration, Inc. (NCRI) led the discussion on Disaster Recovery. Linda stated that the key to avoiding catastrophic consequences when your facility suffers a catastrophic loss can be found in the Three P's of Disaster Recovery: PRAY nothing ever happens; PLAN for something to happen; and PREPARE for everything to happen! The focus of the presentation and discussion was on pre-event planning and contracting. The second table discussion dealt with Real Estate Project Management with Bill Corbett of Waddell and Reed leading the discussion on building new buildings on their property and the process they



Bill Corbe
Reed

went through to achieve their goals. There were many questions and a lot of discussion on this topic. The third table was on Mergers and Acquisitions and their effect on facilities. Jack Tinnel of Hallmark talked about how his group helps the company with audits of the buildings to discover concerns and value in purchasing a new company. Anna Graether of American Century led this discussion on how their companies have used facilities to help them in their purchasing of other companies, especially from the viewpoint of change. Our fourth table on Telecommuting was led by Sherr Zander and John Keffer from Sprint's Telecommuting implementation team. Their many experiences and substantial information on how they are managing it internally was very helpful to those attending their discussion. "Cost Avoidance" was the buzzword from the Sprint Team. Building a new building can reach seven figures. They expect a 400% growth in telecommuting positions. There was time for everyone to attend two of the four discussions. Many people thought it would be a good idea for us to do this at least once a year. There is so much knowledge within our membership and it is so helpful to discuss and share this information.



Linda DeT
National C
Restoratic



John Keffer
Zander Sp
Telecomm



Anna Gra
American
Tinnel, Ha

Corporate Sponsorship

This year the Chapter has benefited through 17 local companies that chose to become Corporate Sponsors of our Chapter. For \$1,000 they received the following benefits:

- Participation in all nine chapter monthly programs
- Sponsorship of one hole at the annual golf tournament
- One foursome in the annual golf tournament
- Hyperlink company's website from chapter's website
- Listing of company on front page of the Facilitator
- Support of the Chapter's annual holiday program

This past June the Golf Tournament raised almost \$7,000 for the Chapter's scholarship students in facility management.

In September of 2001, the Kansas City Chapter is hosting IFMA's World Workplace Conference. This International event draws over 6000 attendees from all over the world. This will be an opportunity to showcase our community.

We are a growing and vital organization and would like your support. Please consider becoming a Corporate Sponsor for 2001. Simply fill out the form below and return it to address indicated.

[Click Here For Form](#)

Help Wanted

Leaders needed: Serving the Greater Kansas City Area; responsible; able to attend a meeting once a month; transportation a must; creative; likes people; interested in professional grade management experience or equivalent; self-starter; no salary but excellent benefits. To contact: Teena Shouse, KC-IFMA Treasurer, 913 327-8201.

At a recent chapter board meeting we discussed the need to elect officers and committee members in September so they would have an opportunity to learn their new job by working a couple months with the outgoing leadership. This is important for chapter continuity and to insure a smooth transition of leadership.

We next discussed nominations and in case you haven't heard, chapter members have been knocking on the doors to assume leadership positions. This is not good.

Many of us old timers have been serving on committees, chairing committees, and serving as officers for many years. Many of us have been elected by default. It's pretty hard to lose an election when one runs against you. Though we are proud of our accomplishments - membership has increased, program attendance is up, we are establishing a national facility management scholarship, we have won our share of national awards over the past years, our Web Site is up and operating, and we have been chosen to host World Workplace - we are getting pooped.

Future success of the Chapter will be dependent on future leadership. There are volunteers to work on programs, membership, the Facilitator and other publications, education, and service doesn't require a whole lot of time. At most, committees may meet once each month and committee members share the work so that no one is burdened.

KC - IFMA can be as good or as bad an experience as we want it to be. Play ball... step up and volunteer to help your professional association grow.

I have volunteered to accept calls from members interested in committee work. My business number is 913 327-8201. I look forward to hearing from some of you.

CFM Exam Review In Kansas City!

On September 7th, we will be presenting a one day version of the CFM Exam Review. This is designed to assist facility professionals seeking certification with preparation for the certification examination. This is a condensed version of the 2 day class that will be held prior to World Workplace 2000 in New Orleans. The course is organized around the following eight areas of facility competency: Facility Function, Planning and Project Management, Communication, Operations and Maintenance, Finance, Quality Assessment and Innovation, Human and Environmental Issues, and Real Estate. The review is designed to assist you in updating and assessing your knowledge related to each area. You will learn the format of the questions and be able to answer sample questions. The purpose of the course is to prepare you for the CFM exam and help you to be more comfortable when you take the exam. The cost for the 2 day class in New Orleans will be \$200 compared to the charge of \$150 for the one day KC class. If you are interested in attending, contact Teena Shouse at 913-315-3046 by August 31st.

End Of Year Financial Statements

July 1, 1999 - June 30, 2000

BALANCE SHEET

ASSETS

Checking	11,164.84
UMB Savings	<u>7,325.91</u>
Total Cash & Bank Accts	18,490.75
UMB CD	5,463.52
Edward Jones General	21,484.38
Edward Jones Scholarship	<u>34,517.87</u>
TOTAL ASSETS	79,956.52

LIABILITIES & EQUITY

Liabilities	0.00
Equity	<u>79,956.52</u>
TOTAL LIABILITIES & EQUITY	79,956.52

CASH FLOW

REVENUE

Administrative	15,056.46
Cash	149.38
Golf	9,798.00
CD	54.53
Programs	8,163.00
Membership	<u>17,235.00</u>
TOTAL REVENUE	50,456.37

EXPENSES

Administrative	18,022.07
Education	562.71
Golf	9,401.12
Programs	11,233.84
Membership	7,840.84
Publications	<u>4,670.59</u>
TOTAL EXPENSES	51,731.17
	-1274.80

Quick Pix



Rick Bond, Diane Bashor, Jane Ann Carmichael (back to camera) and Jennell Hall



Diane Bashor and Jackie Coleman



Teresa Reich Sweetin



Jackie Coleman



Carlyle Melin and Sharon Shook Bill Corbett and Jenr



Jennell Hall and Teena Shouse enjoying the presentation.



David Gaebler and Marie Galvas



Debra E. an Beilharz



Alan Bram and Karen Hand

Kansas City IFMA Board

Rick Bond, CFM, President
Sprint
(913) 315-8464
FAX (913) 315-0632
rick.bond@mail.sprint.com

Teena Shouse, CFM, Vice Presid
Sprint
(913) 315-3046
FAX (913) 315-3303
teena.shouse@mail.sprin

Bill Koppen, Vice President-Membership
Color Art Interiors
(913) 888-6464
FAX (913) 888-4641
bkoppen@colorartkc.com

Ken Fancolly, CFM, Secr
Asset Services-Midwest,
(913) 383-2738
FAX (913) 383-2738
assetservm@aol.com

Alan Bram, CFM, Treasurer
Jewish Community Campus
(913) 327-8201
FAX (913) 327-8040
alanb@jewishkc.org

Sam Davidson, CFM, Past F
Children Internationa
(816) 943-3740
FAX (816) 942-3714
samd@cikc.org

Jennell Hall, Programs
Gerald Jones Co.
(816) 471-0990

Rita Beebee, Chapter Li
Johnson Controls, Inc
(913) 307-4260

FAX (816) 471-3928
jhall@geraldjonesco.com

(913) FAX 492-1167
rita.r.beebee@jci.cor

Peggy Hopkins, Publicity
Steve Maturo & Associates
(816) 531-7661
FAX (816) 531-2011

Linda DeTienne, Newsle
National Catastrophe Restorator
(913) 663-4111
FAX (913) 663-4433
detienne@ncricat.cor

Becky Beilharz, Facility Audits
Workplace Strategies
(913) 362-1040
FAX (913) 362-1042
blbeilharz@aol.com

Roberta Lovin, Educati
DST Realty, Inc.
(816) 435-8279
FAX (816) 435-8210
rllovin@dstsystems.cc

Cindy Brock-Korn, Member Hospitality
Taylor Ball, LC
(816) 444-8000
FAX (816) 444-8700
cindyb@taylorball.com

Jim Funderburke, Golf Tour
R.D. Mann Commercial Ca
(816) 842-1171
FAX (816) 842-1157
jimf@rdmann.com

[Welcome](#) [IFMA Board](#) [Corporate Sponsors](#) [National Website](#) [Resources](#) [Newsletter](#) [Education](#) [CFM](#)
[Contacts](#)

Web Site Development and Service provided by [21st Century Solutions, Inc.](#)
Powered by [siteLaunch](#) technology
Copyright (c) 2000-2004 [www.kcifma.com](#) and [21st Century Solutions, Inc.](#)
All rights reserved.